

Traffic Safety External Release Announcement

Date: 12/22/11

Subject: TruFlash/IR Link Modules Product Release

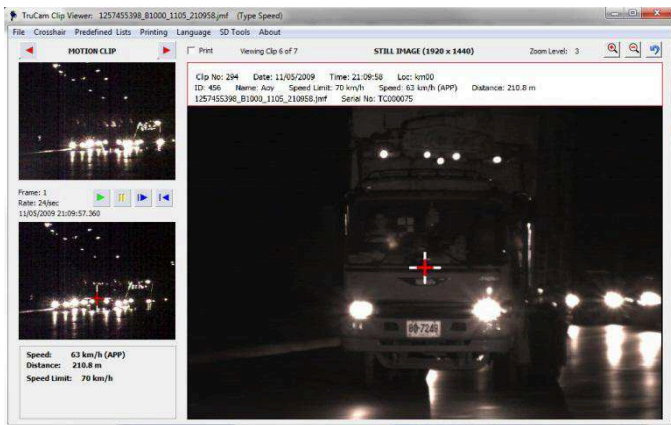
To: LTI International Dealers and Sales Managers

TruFlash

The all new **TruFlash** is designed to operate with the LTI 20/20 TruCAM[®] and provides superior nighttime IR illumination for crisp, clear and fully recognizable images of a violator's license plate.

Designed to operate in low light and no light conditions, this system is ideal for all of your nighttime speeding enforcement operations in any environment and is both rugged and portable.

The **TruFlash** is easy to integrate with the LTI 20/20 TruCAM. Simply toggle the TruCAM into Night Mode, connect the applicable cabling, add the nighttime camera lens filter to the TruCAM to block headlight glare and you have a fully functional nighttime photo speed enforcement system.



Notable Specs:

- TruFlash Weight: 9.9 kg w/batteries
- TruFlash Size: 38 H x 23 W x 18 D cm
- Weight w/batteries in Shipping Box: 11.2 kg
- Shipping Box Size: 42 H x 34 W x 27 D cm
- Illumination Range: 10 – 40 m

- Power: Self-contained 2 x 12v 6 amp hour batteries
- Construction: Aluminum and Electrolytic Galvanized Iron (EGI)
- Environment: NEMA 4, IP53 water and dust resistant
- Operating Temperature: -10 degrees to 60 degrees C

